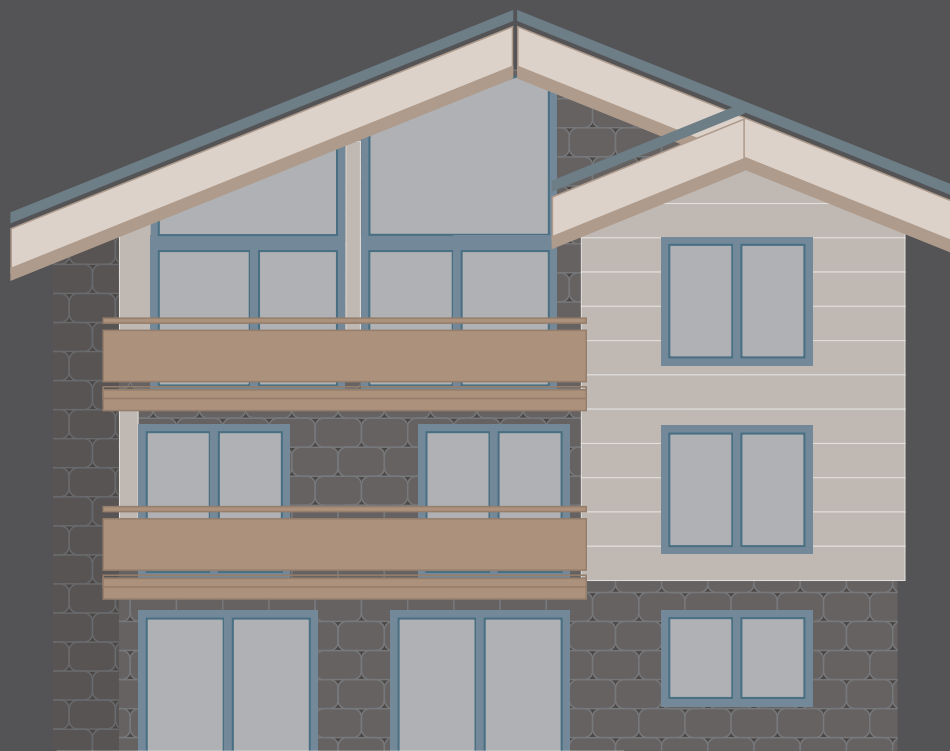


CHALET WHITE PEARL



ACCOMODATION

MAXIMUM GUESTS: 10+4
LIVING AREA: 550M2
STAFF: 4 and ZSC Concierge Team
BEDROOMS: 5 (includes 2 suites)
INTERNAL ELEVATOR
SKI-IN AND SKI-OUT

ACCESS

Located in the exclusive area of Winkelmaten, Zermatt's only ski-in ski-out district, 4 minutes by electric car to town centre and ski lifts, 15 minute walk to town centre.

LOWER GROUND FLOOR

Wellness area with 10m swimming pool with counter-current water jet and 4 massage jets, Rainfall shower, relaxation area, hammam / steam room, Finnish sauna and separate WC.
Stair access to outdoor terrace and 3m2 power jet plunge pool.
Massage room
Cinema room with large LCD TV, DVD, Pool table and bar area.
Private studio for staff.
Separate ski store with heated boots racks.

GROUND FLOOR

Kitchen and dining room, reading area and lounge with open-fire and French doors opening onto the terrace with Matterhorn views. Office area and TV with large LCD Screen, UK Channels, DVD player and WiFi. Integrated music system with i-pod docking stations, internal lift, DVDs, games, books.

1ST FLOOR

THE ABERNATHY TWIN or super-king size double bed with direct view of the Matterhorn, balcony with Matterhorn views. Free-standing bath-tub and en-suite bathroom with rain shower, sink, bidet and WC.

LA HUE RFANA ("THE ORPHAN") QUAD bedroom or super-king size double bed. Private bathroom with shower and WC. Balcony with views across the forest to the Matterhorn.

THE ARCO TWIN or king-size double bed. Freestanding bath-tub and en suite rain shower and WC. Balcony with views across the forest to the Matterhorn.

2ND FLOOR

LA PEREGRINA ("THE PILGRIM") SUITE with king-size double bed and with view of Matterhorn. Free standing bath-tub and en suite rain shower and WC. Balcony with view across the forest to the Matterhorn. Lounge area with fireplace, integrated music system, TV and DVD.

LA PELLEGRINA ("THE INCOMPARABLE") SUITE with king-size double bed with direct view of Matterhorn. Free standing bath-tub and en suite bathroom with rain shower and WC. Balcony with view across the forest to the Matterhorn. Separate lounge/dressing room with fireplace, integrated music system, TV and DVD.

CREATURE COMFORTS

Feather (or anti-allergic) duvets and pillows, personal bathrobes and slippers, hairdryer in each bathroom, Cowshed bathroom products, fresh flowers and daily newspapers.

COMMUNICATIONS

Study area with guest computer, printer/fax and wireless Internet throughout.

CHALET WHITE PEARL



2ND FLOOR

LA PEREGRINA ("THE PILGRIM") SUITE with king-size double bed and with view of Matterhorn. Free standing bath-tub and en suite rain shower and WC. Balcony with view across the forest to the Matterhorn. Lounge area with fireplace, integrated music system, TV and DVD.

LA PELLEGRINA ("THE INCOMPARABLE") SUITE with king-size double bed with direct view of Matterhorn. Free standing bath-tub and en suite bathroom with rain shower and WC. Balcony with view across the forest to the Matterhorn. Separate lounge/dressing room with fireplace, integrated music system, TV and DVD.

CHALET WHITE PEARL



1ST FLOOR

THE ABERNATHY ROOM twin or super-king size double bed with direct view of the Matterhorn, balcony with Matterhorn views. Free-standing bath-tub and en-suite bathroom with rain shower, twin sinks, bidet and WC.

LA HUERFANA ("THE ORPHAN") quad bedroom or super-king size double bed. Private bathroom with shower and WC. Balcony with views across the forest to the Matterhorn.

THE ARCO ROOM twin or king-size double bed. Freestanding bath-tub and en suite rain shower and WC. Balcony with views across the forest to the Matterhorn.

CHALET WHITE PEARL



GROUND FLOOR

Kitchen and dining room, reading area and lounge with open-fire and French doors opening onto the terrace with Matterhorn views. Office area and TV with large LCD Screen, UK Channels, DVD player and WiFi. Integrated music system with i-pod docking stations, internal lift, DVDs, games, books.

CHALET WHITE PEARL



LOWER GROUND FLOOR

Wellness area with 10m swimming pool with counter-current water jet and 4 massage jets, Rainfall shower, relaxation area, hammam / steam room, Finnish sauna and separate WC.

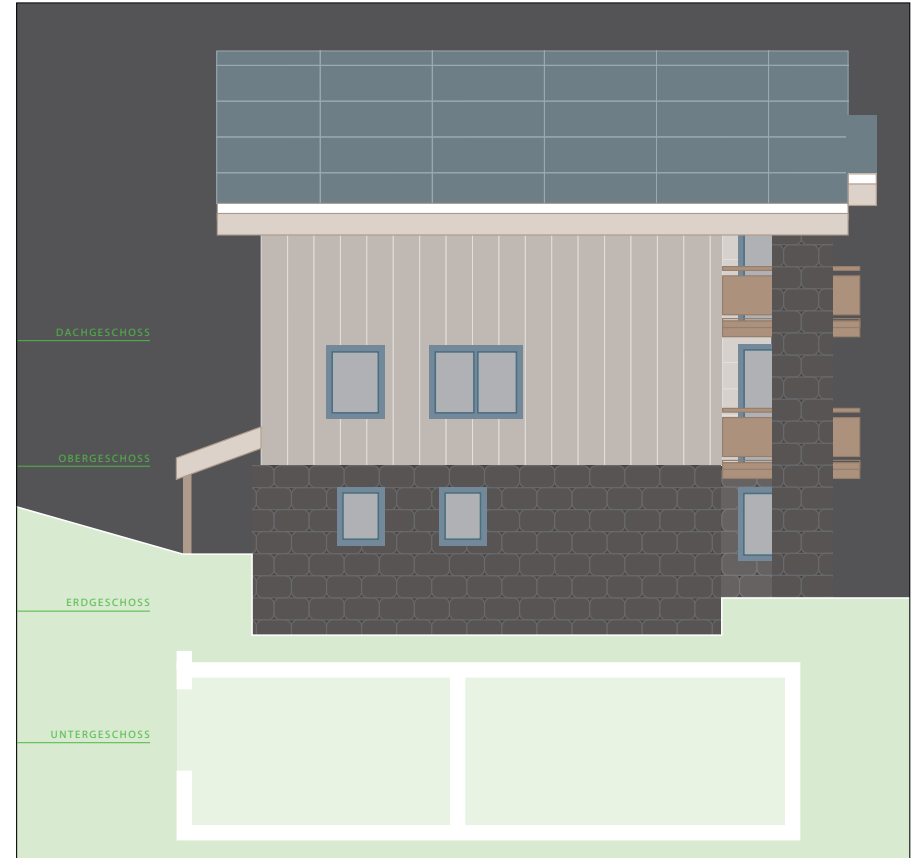
Stair access to outdoor terrace and 3m² power jet plunge pool.

Massage room

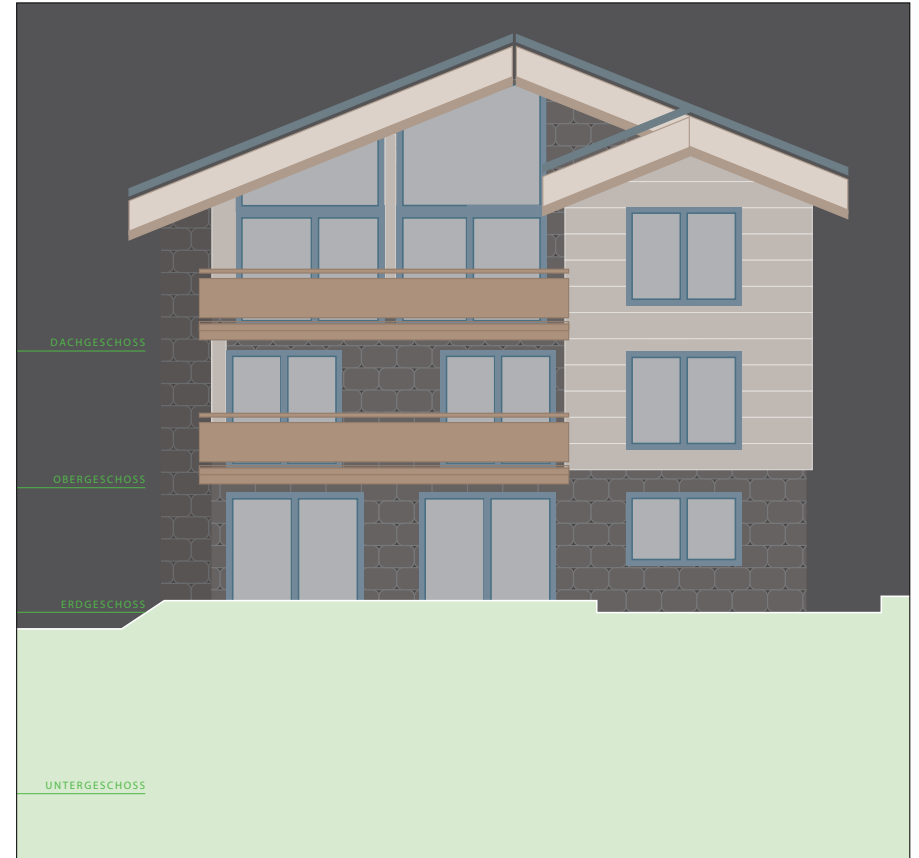
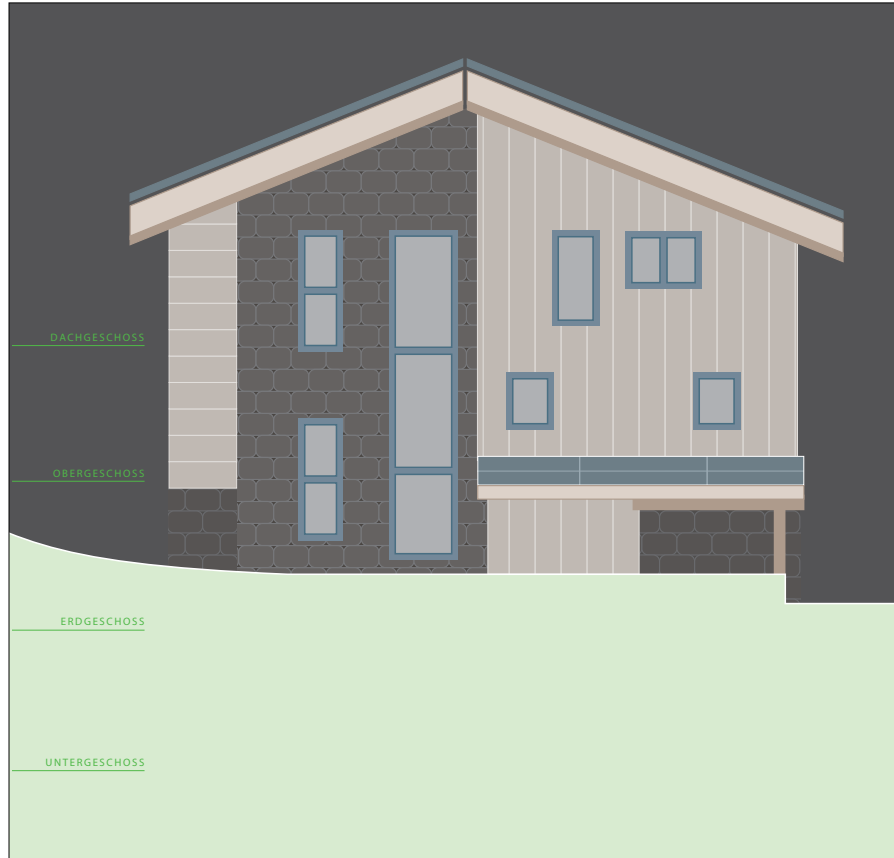
Cinema room with large LCD TV, DVD, Pool table and bar area.

Separate ski store with heated boots racks.

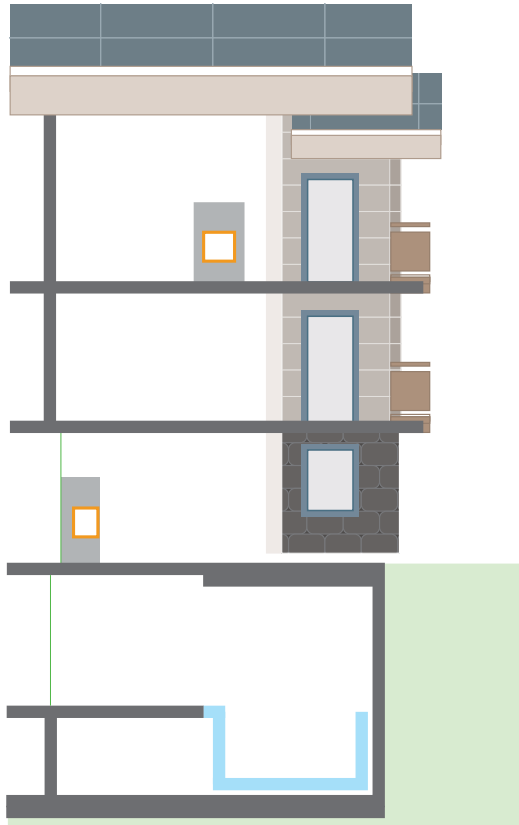
CHALET WHITE PEARL



CHALET WHITE PEARL



CHALET WHITE PEARL



DACHGESCHOSS

OBERGESCHOSS

ERDGESCHOSS

UNTERGESCHOSS

SCHWIMMBAD

